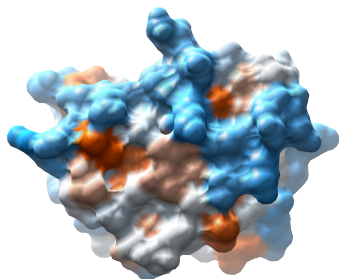
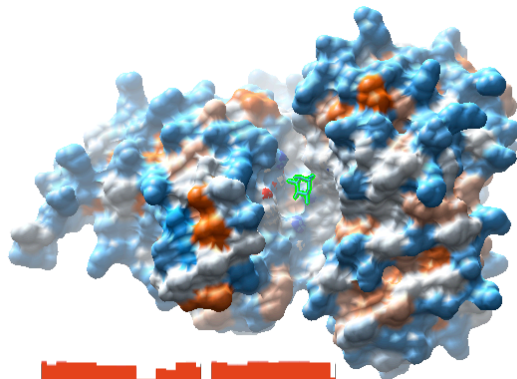


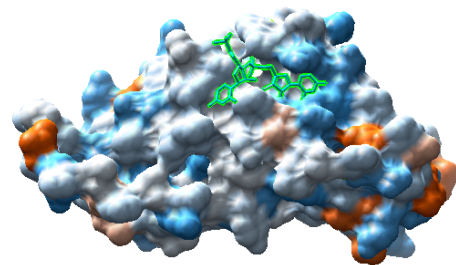
Examples of modelable *S. mutans* virulence factors



a. not druggable
proton/lactate pump
zDOPE (model reliability) = -1.73
drugEBllity score = -0.71

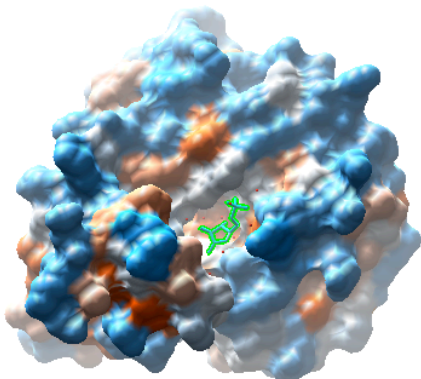


b. druggable
multiple sugar binding protein
zDOPE (model reliability) = -1.57
drugEBllity score = 0.76

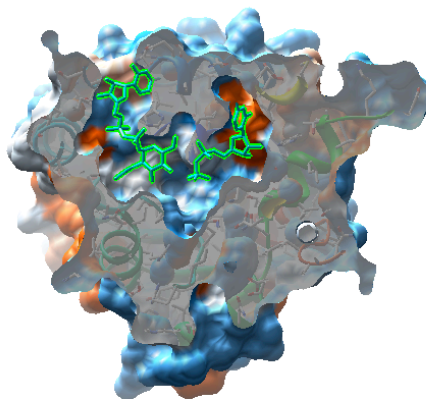


c. druggable and favorable profile
major cell-surface adhesin
zDOPE (model reliability) = -1.50
drugEBllity score = 0.41

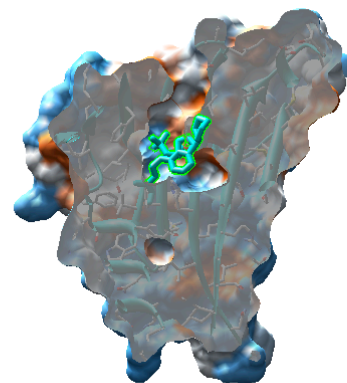
Examples of modelable and druggable *S. mutans* proteins



d. crystal structure
glucosamine-6-PO₄ deaminase
resolution = 2.03 Å
drugEBllity score = 0.77



e. comparative model
nonhydrolyzing UDP acetyl-
glucosamine epimerase
zDOPE (model reliability) = -1.75
drugEBllity score = 0.82



f. favorable profile
unknown enzyme
resolution = 2.38 Å
drugEBllity score = 0.57