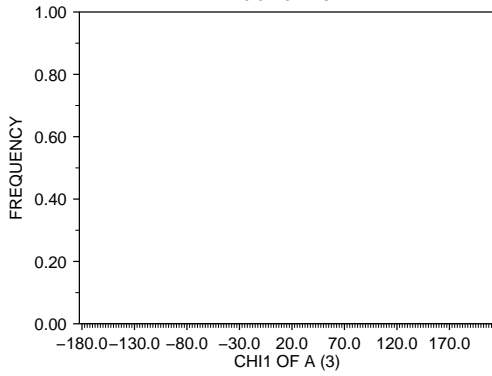
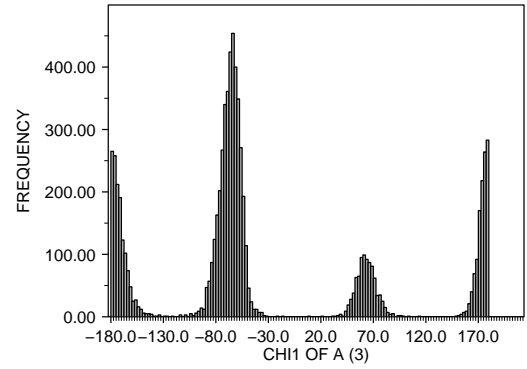


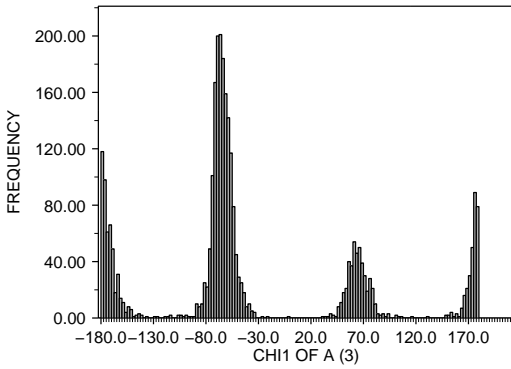
<1.4 : X-RAY RESOLUTION OF A (35)
ALA : RESIDUE TYPE OF A (1)
0.0 POINTS



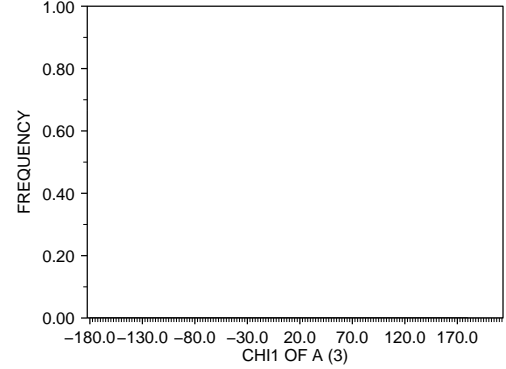
<1.4 : X-RAY RESOLUTION OF A (35)
PHE : RESIDUE TYPE OF A (1)
7462.0 POINTS



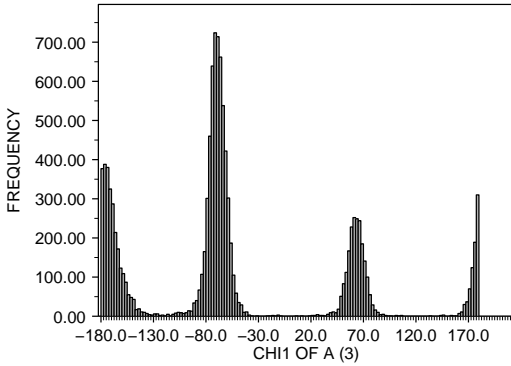
<1.4 : X-RAY RESOLUTION OF A (35)
CYS : RESIDUE TYPE OF A (1)
2894.0 POINTS



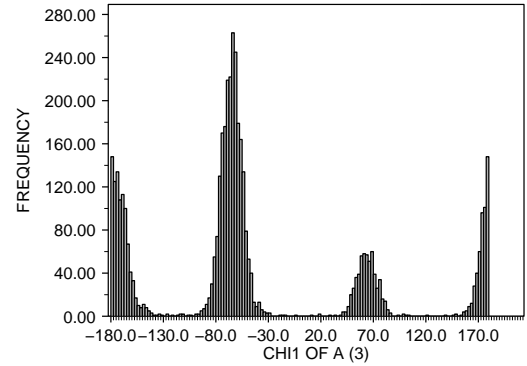
<1.4 : X-RAY RESOLUTION OF A (35)
GLY : RESIDUE TYPE OF A (1)
0.0 POINTS



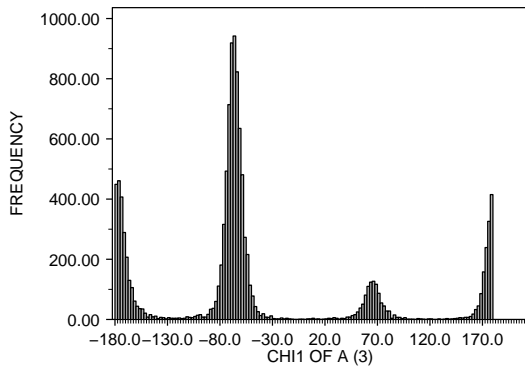
<1.4 : X-RAY RESOLUTION OF A (35)
ASP : RESIDUE TYPE OF A (1)
11199.0 POINTS



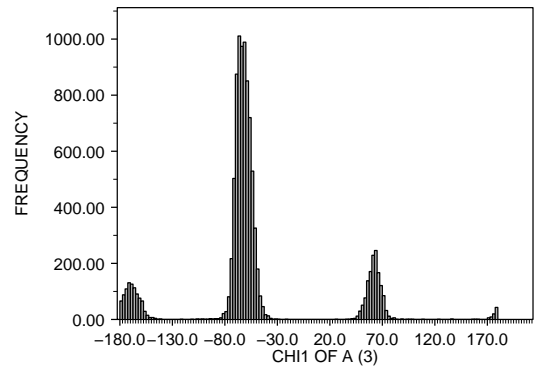
<1.4 : X-RAY RESOLUTION OF A (35)
HIS : RESIDUE TYPE OF A (1)
4356.0 POINTS



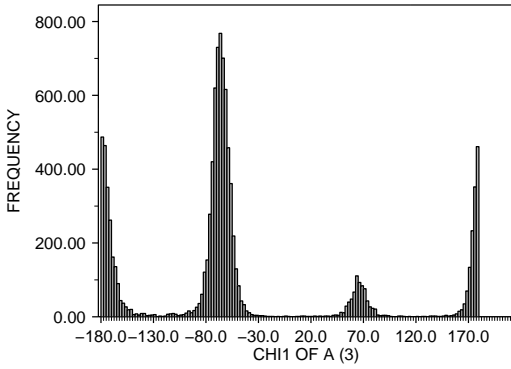
<1.4 : X-RAY RESOLUTION OF A (35)
GLU : RESIDUE TYPE OF A (1)
11437.0 POINTS



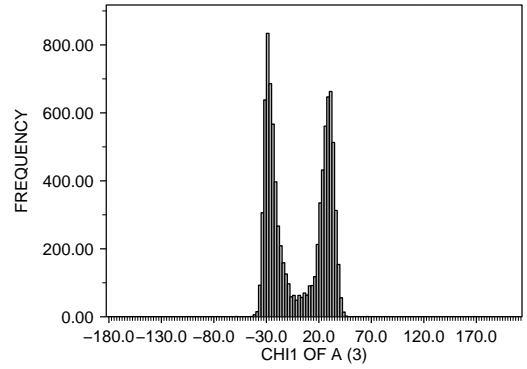
<1.4 : X-RAY RESOLUTION OF A (35)
ILE : RESIDUE TYPE OF A (1)
9913.0 POINTS



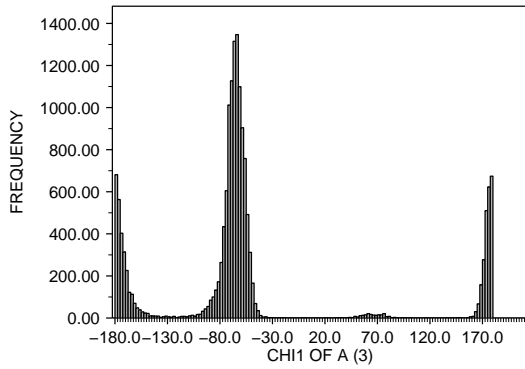
<1.4 : X-RAY RESOLUTION OF A (35)
LYS : RESIDUE TYPE OF A (1)
10272.0 POINTS



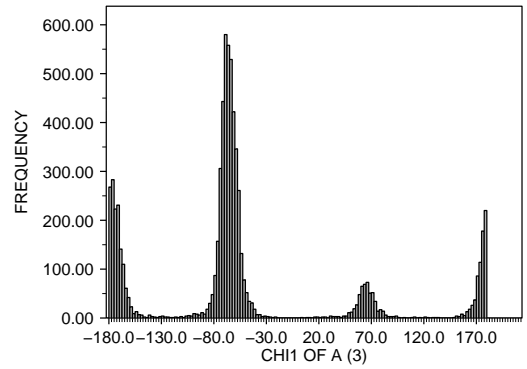
<1.4 : X-RAY RESOLUTION OF A (35)
PRO : RESIDUE TYPE OF A (1)
9032.0 POINTS



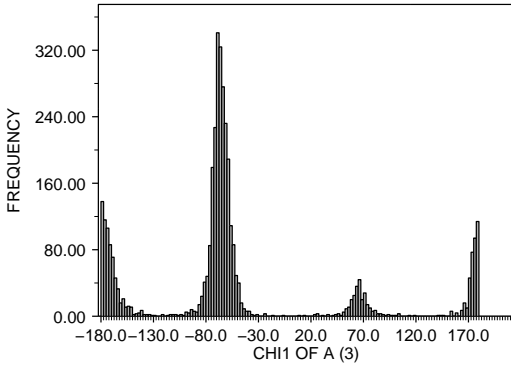
<1.4 : X-RAY RESOLUTION OF A (35)
LEU : RESIDUE TYPE OF A (1)
15978.0 POINTS



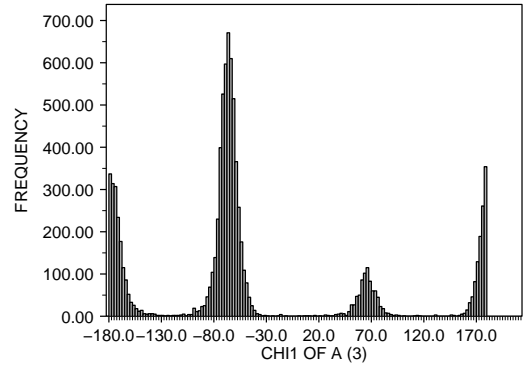
<1.4 : X-RAY RESOLUTION OF A (35)
GLN : RESIDUE TYPE OF A (1)
6950.0 POINTS



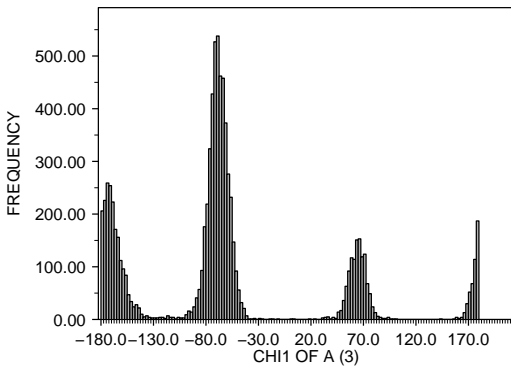
<1.4 : X-RAY RESOLUTION OF A (35)
MET : RESIDUE TYPE OF A (1)
3691.0 POINTS



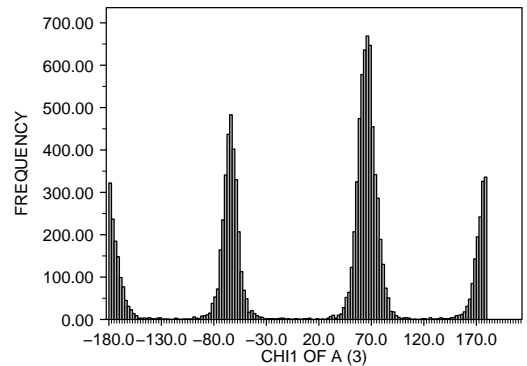
<1.4 : X-RAY RESOLUTION OF A (35)
ARG : RESIDUE TYPE OF A (1)
8829.0 POINTS



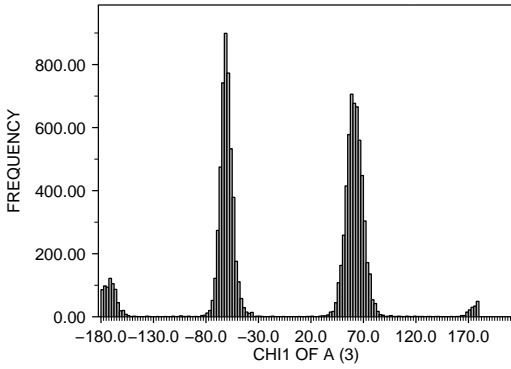
<1.4 : X-RAY RESOLUTION OF A (35)
ASN : RESIDUE TYPE OF A (1)
8319.0 POINTS



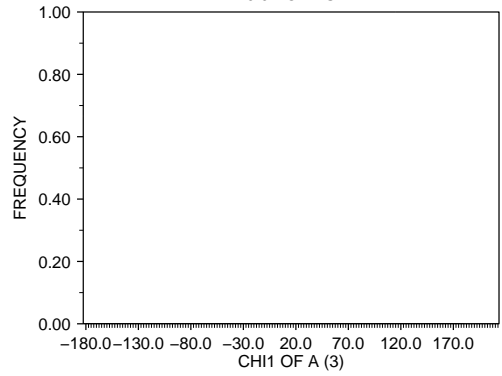
<1.4 : X-RAY RESOLUTION OF A (35)
SER : RESIDUE TYPE OF A (1)
11306.0 POINTS



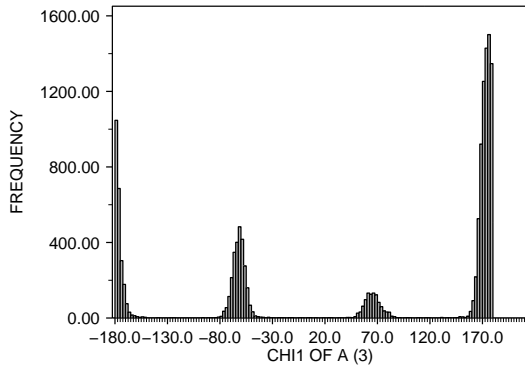
<1.4 : X-RAY RESOLUTION OF A (35)
THR : RESIDUE TYPE OF A (1)
11020.0 POINTS



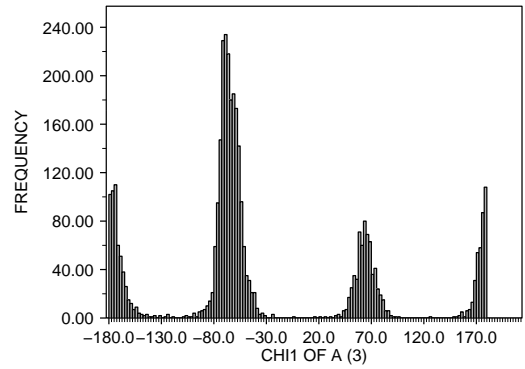
1.4-1.6 : X-RAY RESOLUTION OF A (35)
ALA : RESIDUE TYPE OF A (1)
0.0 POINTS



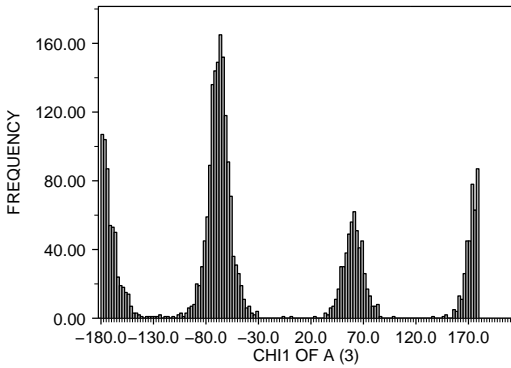
<1.4 : X-RAY RESOLUTION OF A (35)
VAL : RESIDUE TYPE OF A (1)
13431.0 POINTS



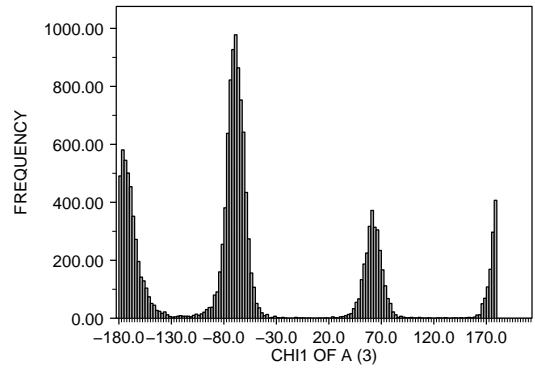
1.4-1.6 : X-RAY RESOLUTION OF A (35)
CYS : RESIDUE TYPE OF A (1)
3579.0 POINTS



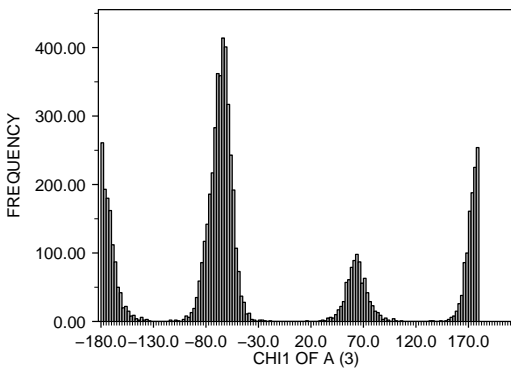
<1.4 : X-RAY RESOLUTION OF A (35)
TRP : RESIDUE TYPE OF A (1)
2946.0 POINTS



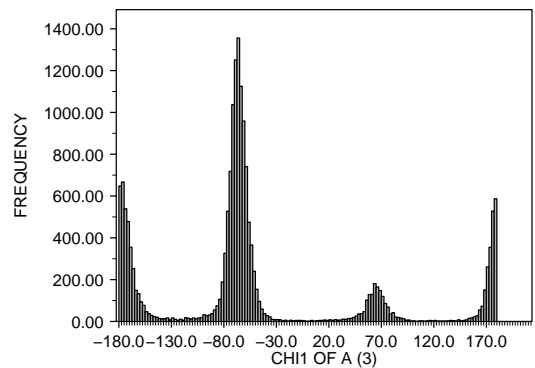
1.4-1.6 : X-RAY RESOLUTION OF A (35)
ASP : RESIDUE TYPE OF A (1)
15891.0 POINTS



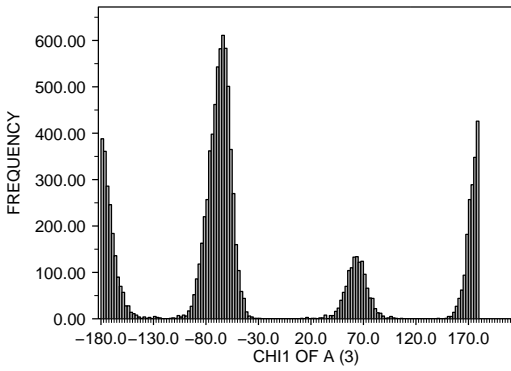
<1.4 : X-RAY RESOLUTION OF A (35)
TYR : RESIDUE TYPE OF A (1)
6875.0 POINTS



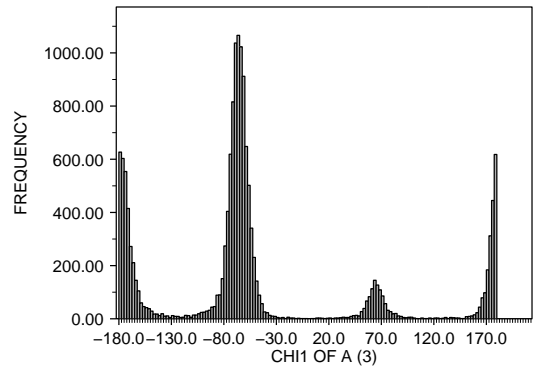
1.4-1.6 : X-RAY RESOLUTION OF A (35)
GLU : RESIDUE TYPE OF A (1)
17656.0 POINTS



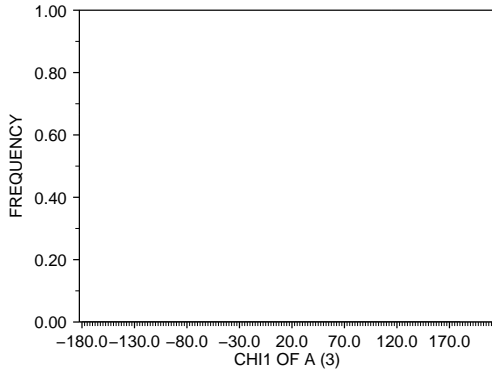
1.4-1.6 : X-RAY RESOLUTION OF A (35)
PHE : RESIDUE TYPE OF A (1)
11007.0 POINTS



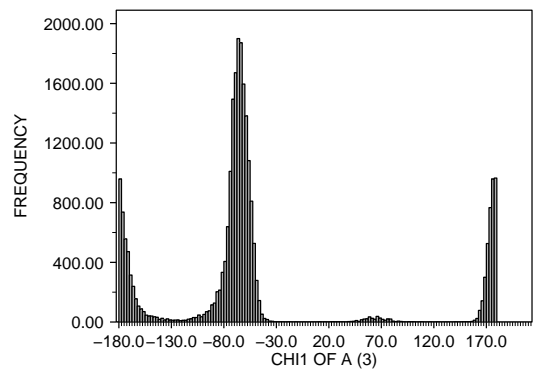
1.4-1.6 : X-RAY RESOLUTION OF A (35)
LYS : RESIDUE TYPE OF A (1)
15133.0 POINTS



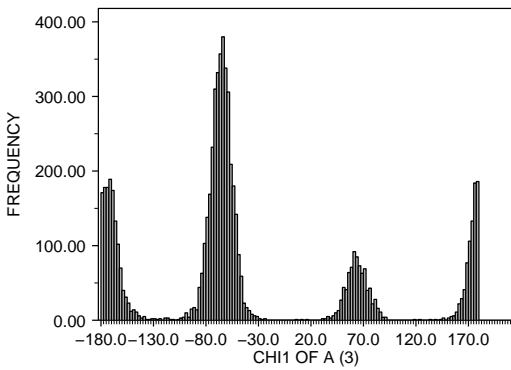
1.4-1.6 : X-RAY RESOLUTION OF A (35)
GLY : RESIDUE TYPE OF A (1)
0.0 POINTS



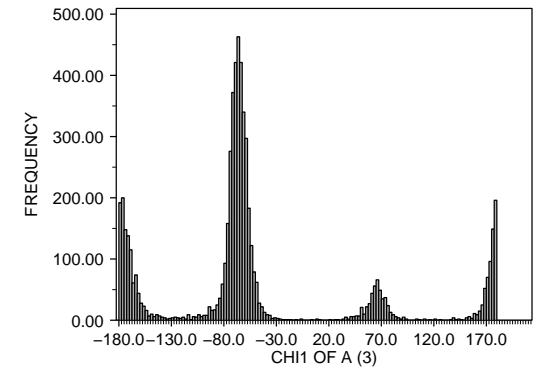
1.4-1.6 : X-RAY RESOLUTION OF A (35)
LEU : RESIDUE TYPE OF A (1)
24471.0 POINTS



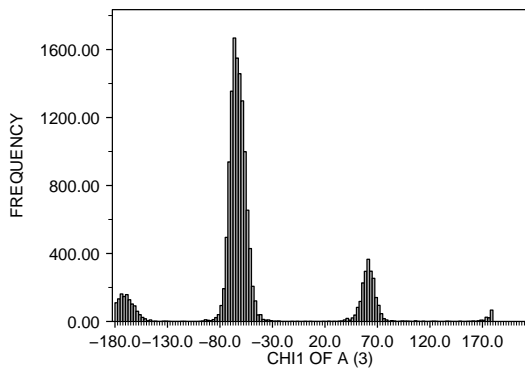
1.4-1.6 : X-RAY RESOLUTION OF A (35)
HIS : RESIDUE TYPE OF A (1)
6604.0 POINTS



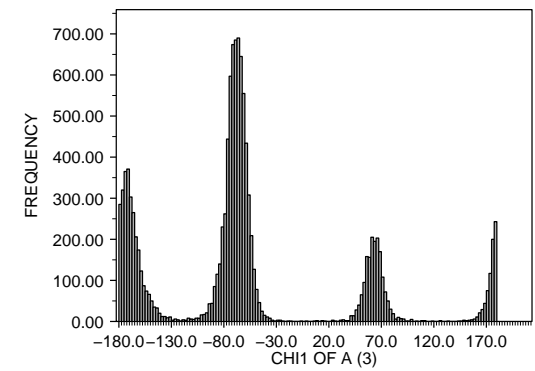
1.4-1.6 : X-RAY RESOLUTION OF A (35)
MET : RESIDUE TYPE OF A (1)
5856.0 POINTS



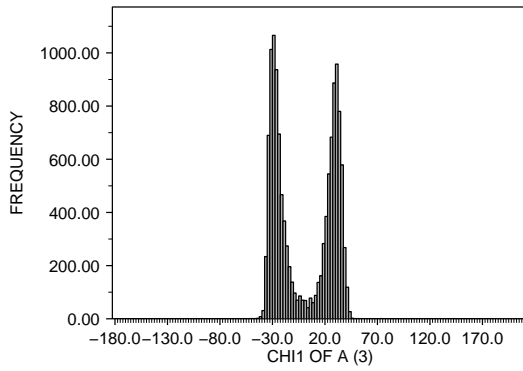
1.4-1.6 : X-RAY RESOLUTION OF A (35)
ILE : RESIDUE TYPE OF A (1)
15104.0 POINTS



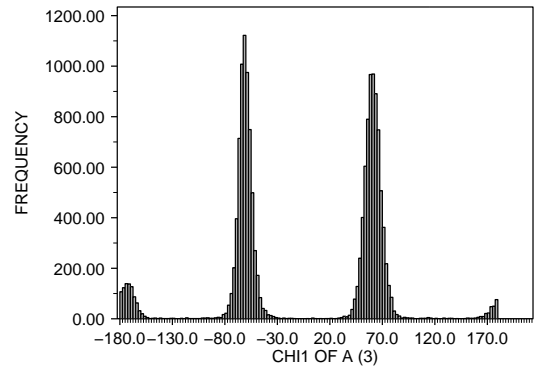
1.4-1.6 : X-RAY RESOLUTION OF A (35)
ASN : RESIDUE TYPE OF A (1)
11864.0 POINTS



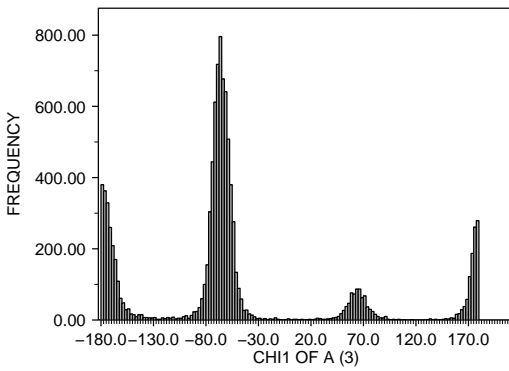
1.4-1.6 : X-RAY RESOLUTION OF A (35)
PRO : RESIDUE TYPE OF A (1)
12600.0 POINTS



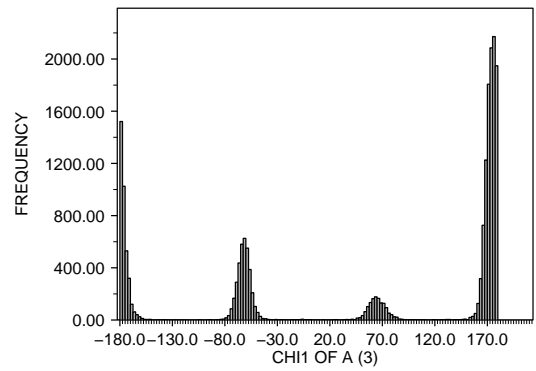
1.4-1.6 : X-RAY RESOLUTION OF A (35)
THR : RESIDUE TYPE OF A (1)
14986.0 POINTS



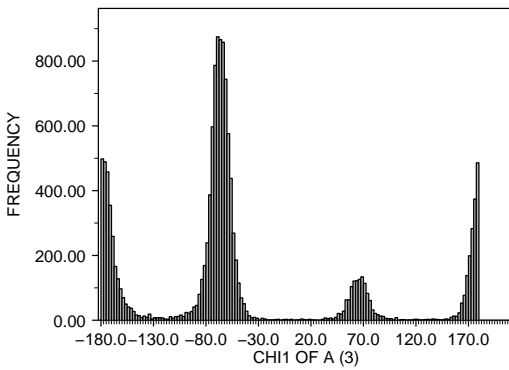
1.4-1.6 : X-RAY RESOLUTION OF A (35)
GLN : RESIDUE TYPE OF A (1)
10167.0 POINTS



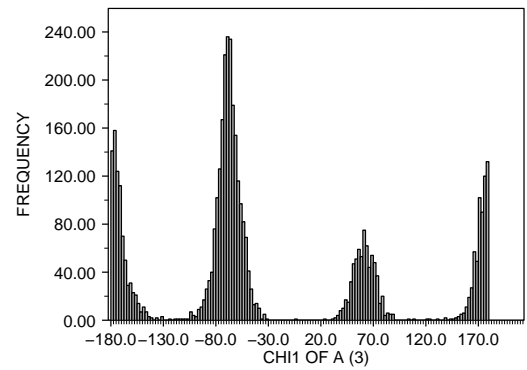
1.4-1.6 : X-RAY RESOLUTION OF A (35)
VAL : RESIDUE TYPE OF A (1)
19323.0 POINTS



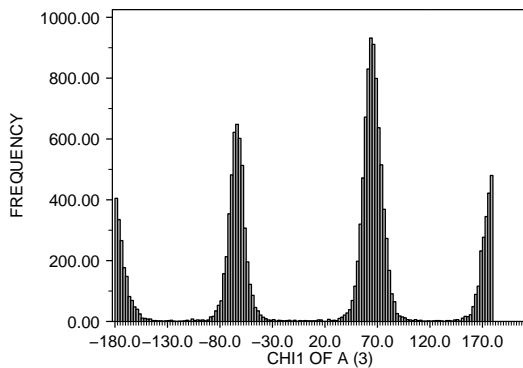
1.4-1.6 : X-RAY RESOLUTION OF A (35)
ARG : RESIDUE TYPE OF A (1)
13482.0 POINTS



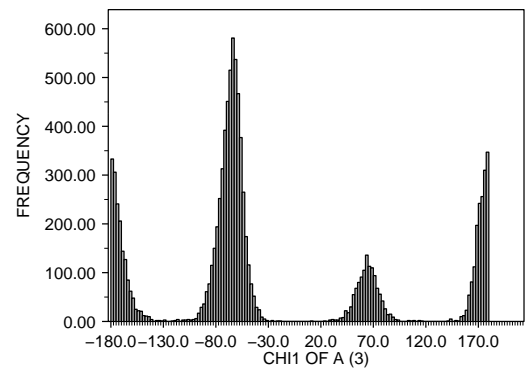
1.4-1.6 : X-RAY RESOLUTION OF A (35)
TRP : RESIDUE TYPE OF A (1)
4242.0 POINTS



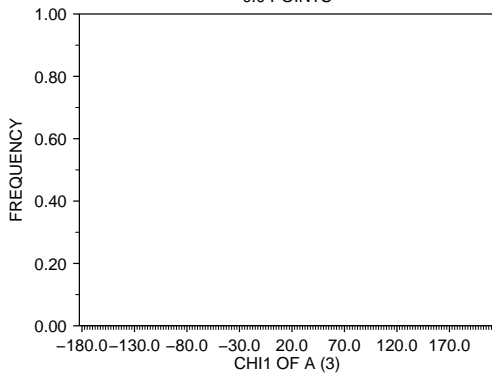
1.4-1.6 : X-RAY RESOLUTION OF A (35)
SER : RESIDUE TYPE OF A (1)
16146.0 POINTS



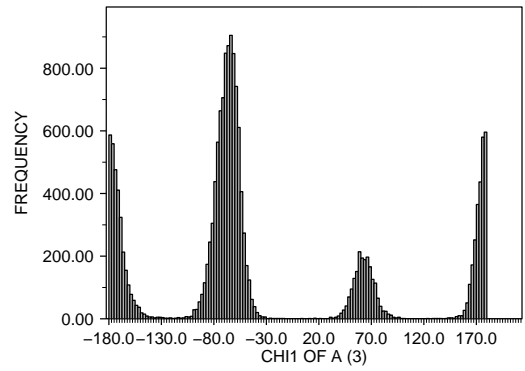
1.4-1.6 : X-RAY RESOLUTION OF A (35)
TYR : RESIDUE TYPE OF A (1)
9866.0 POINTS



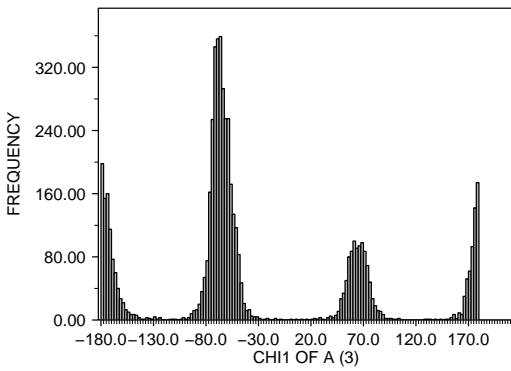
1.6-1.8 : X-RAY RESOLUTION OF A (35)
ALA : RESIDUE TYPE OF A (1)
0.0 POINTS



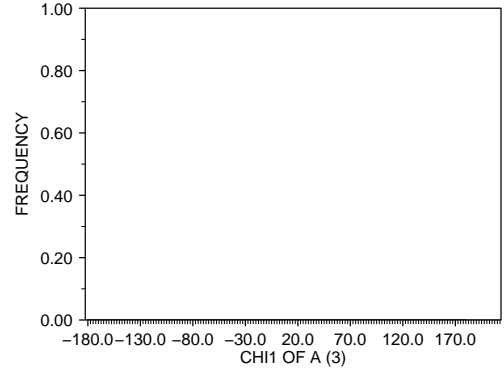
1.6-1.8 : X-RAY RESOLUTION OF A (35)
PHE : RESIDUE TYPE OF A (1)
17099.0 POINTS



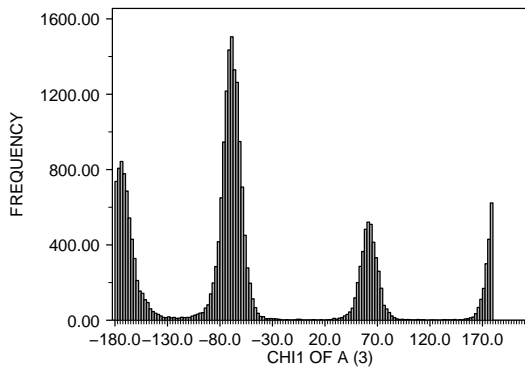
1.6-1.8 : X-RAY RESOLUTION OF A (35)
CYS : RESIDUE TYPE OF A (1)
5622.0 POINTS



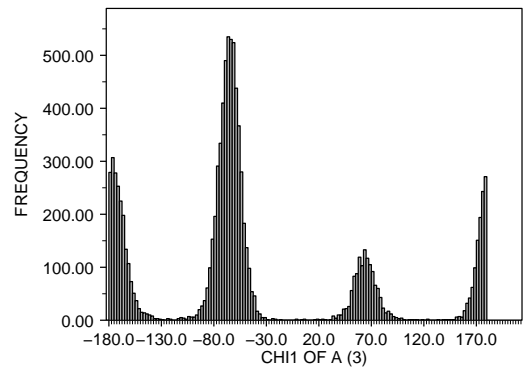
1.6-1.8 : X-RAY RESOLUTION OF A (35)
GLY : RESIDUE TYPE OF A (1)
0.0 POINTS



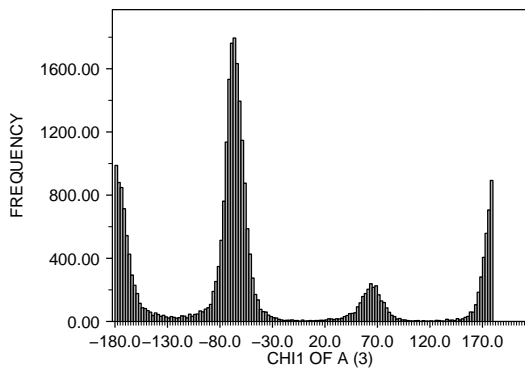
1.6-1.8 : X-RAY RESOLUTION OF A (35)
ASP : RESIDUE TYPE OF A (1)
24756.0 POINTS



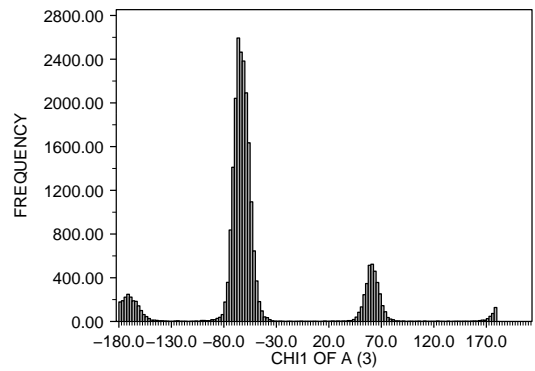
1.6-1.8 : X-RAY RESOLUTION OF A (35)
HIS : RESIDUE TYPE OF A (1)
9845.0 POINTS



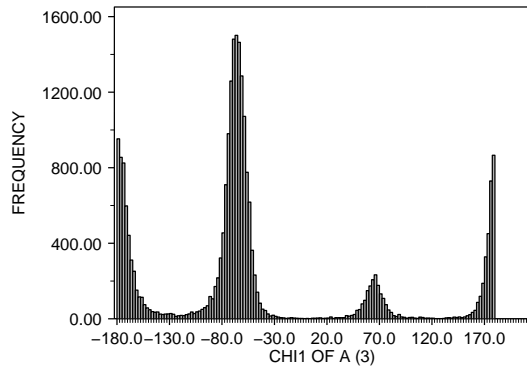
1.6-1.8 : X-RAY RESOLUTION OF A (35)
GLU : RESIDUE TYPE OF A (1)
27820.0 POINTS



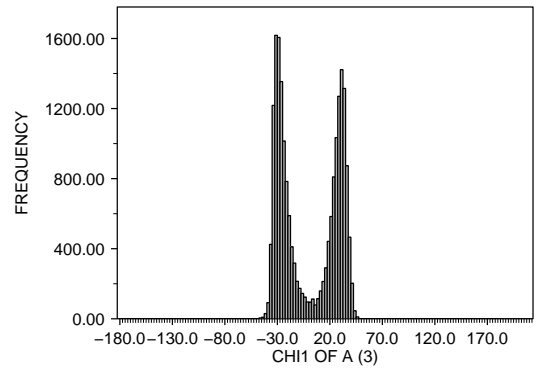
1.6-1.8 : X-RAY RESOLUTION OF A (35)
ILE : RESIDUE TYPE OF A (1)
24295.0 POINTS



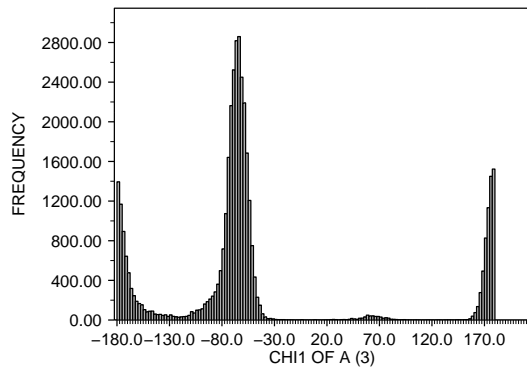
1.6-1.8 : X-RAY RESOLUTION OF A (35)
LYS : RESIDUE TYPE OF A (1)
23870.0 POINTS



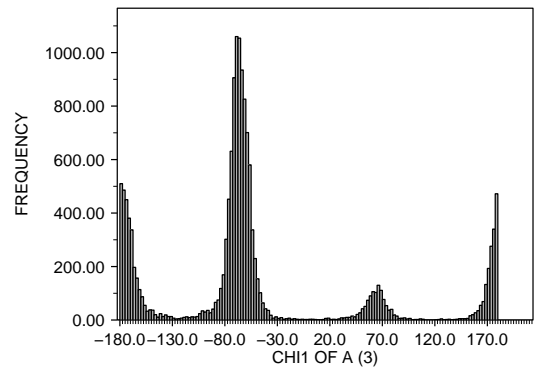
1.6-1.8 : X-RAY RESOLUTION OF A (35)
PRO : RESIDUE TYPE OF A (1)
19772.0 POINTS



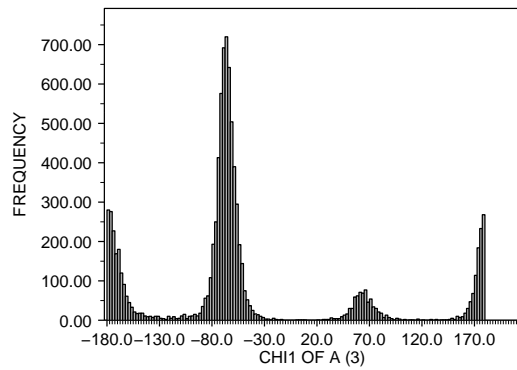
1.6-1.8 : X-RAY RESOLUTION OF A (35)
LEU : RESIDUE TYPE OF A (1)
38540.0 POINTS



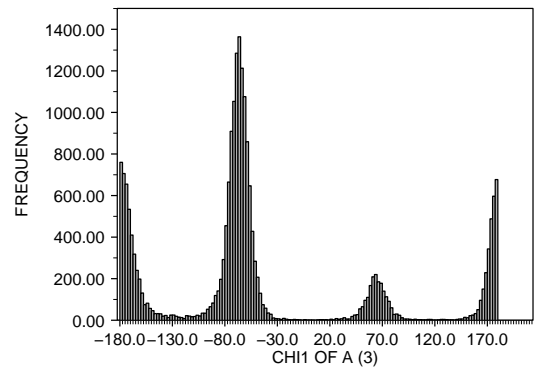
1.6-1.8 : X-RAY RESOLUTION OF A (35)
GLN : RESIDUE TYPE OF A (1)
15019.0 POINTS



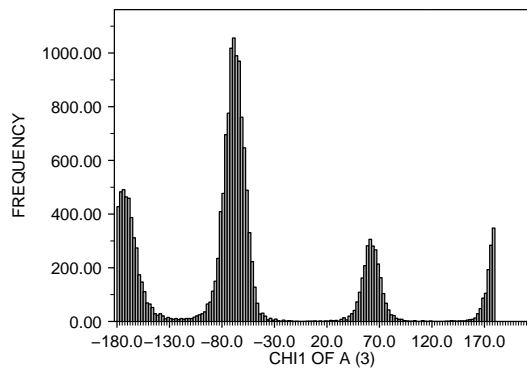
1.6-1.8 : X-RAY RESOLUTION OF A (35)
MET : RESIDUE TYPE OF A (1)
8997.0 POINTS



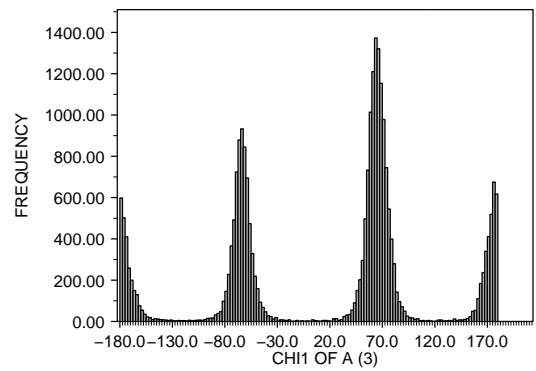
1.6-1.8 : X-RAY RESOLUTION OF A (35)
ARG : RESIDUE TYPE OF A (1)
21175.0 POINTS



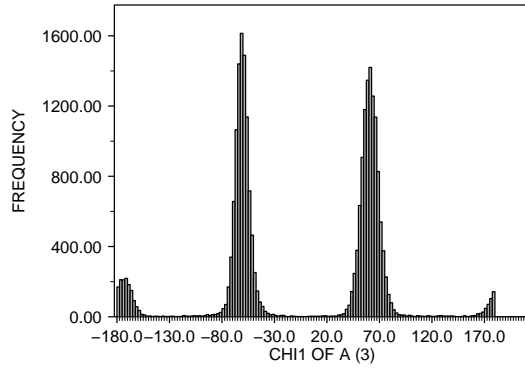
1.6-1.8 : X-RAY RESOLUTION OF A (35)
ASN : RESIDUE TYPE OF A (1)
17713.0 POINTS



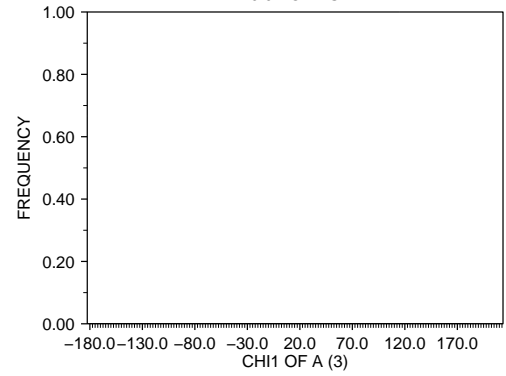
1.6-1.8 : X-RAY RESOLUTION OF A (35)
SER : RESIDUE TYPE OF A (1)
24651.0 POINTS



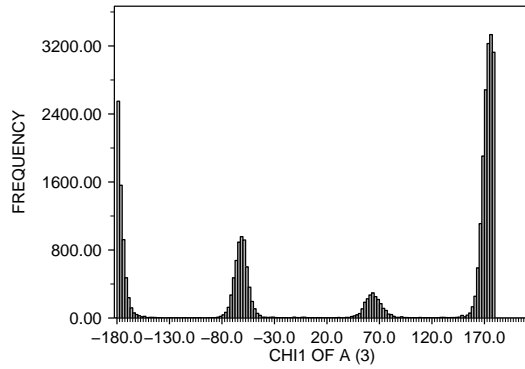
1.6-1.8 : X-RAY RESOLUTION OF A (35)
THR : RESIDUE TYPE OF A (1)
23050.0 POINTS



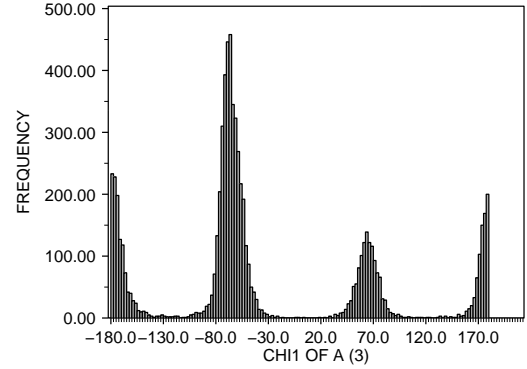
1.8-2.0 : X-RAY RESOLUTION OF A (35)
ALA : RESIDUE TYPE OF A (1)
0.0 POINTS



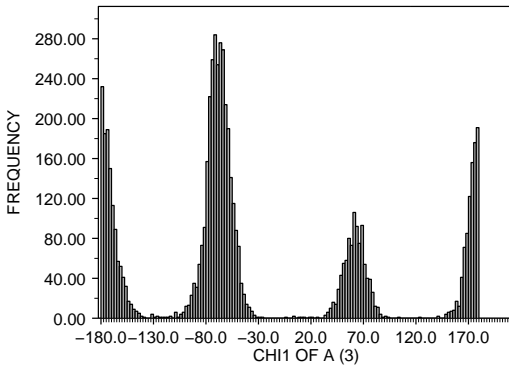
1.6-1.8 : X-RAY RESOLUTION OF A (35)
VAL : RESIDUE TYPE OF A (1)
30890.0 POINTS



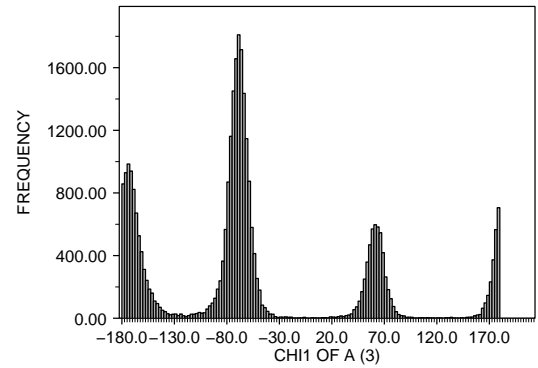
1.8-2.0 : X-RAY RESOLUTION OF A (35)
CYS : RESIDUE TYPE OF A (1)
7079.0 POINTS



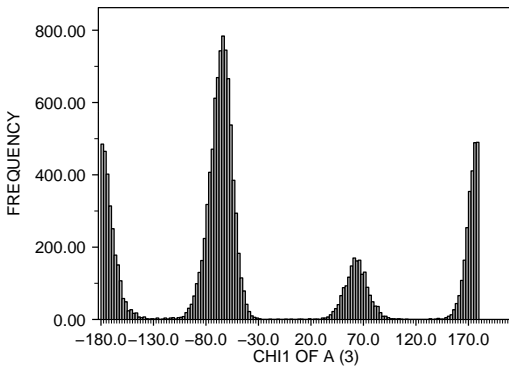
1.6-1.8 : X-RAY RESOLUTION OF A (35)
TRP : RESIDUE TYPE OF A (1)
6047.0 POINTS



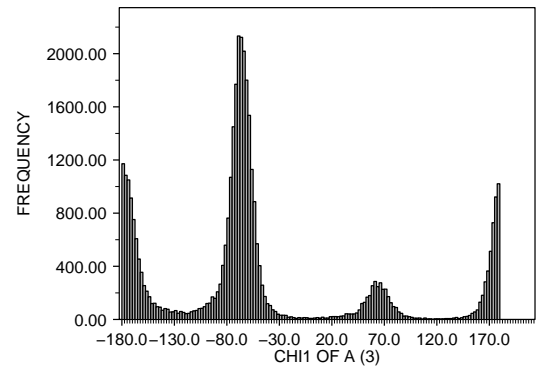
1.8-2.0 : X-RAY RESOLUTION OF A (35)
ASP : RESIDUE TYPE OF A (1)
30806.0 POINTS



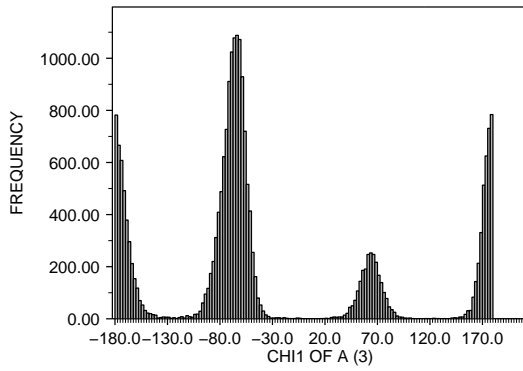
1.6-1.8 : X-RAY RESOLUTION OF A (35)
TYR : RESIDUE TYPE OF A (1)
14644.0 POINTS



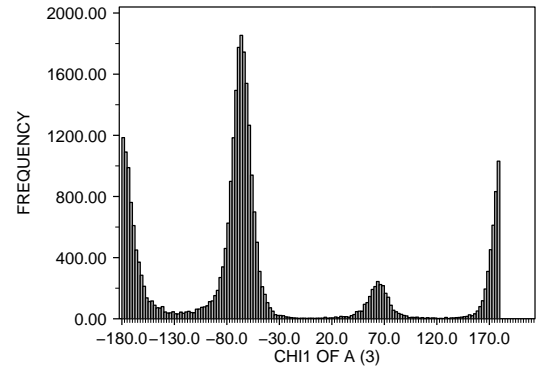
1.8-2.0 : X-RAY RESOLUTION OF A (35)
GLU : RESIDUE TYPE OF A (1)
37118.0 POINTS



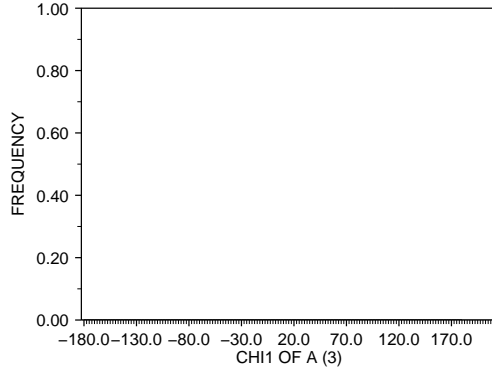
1.8-2.0 : X-RAY RESOLUTION OF A (35)
PHE : RESIDUE TYPE OF A (1)
21673.0 POINTS



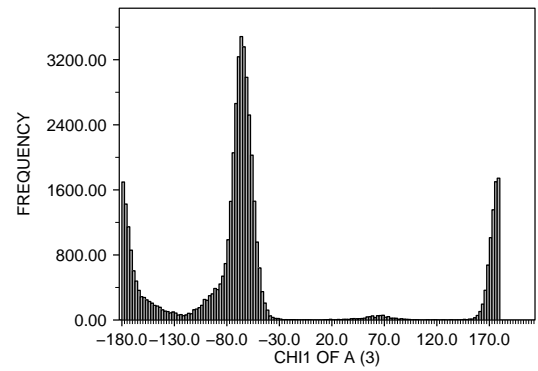
1.8-2.0 : X-RAY RESOLUTION OF A (35)
LYS : RESIDUE TYPE OF A (1)
30985.0 POINTS



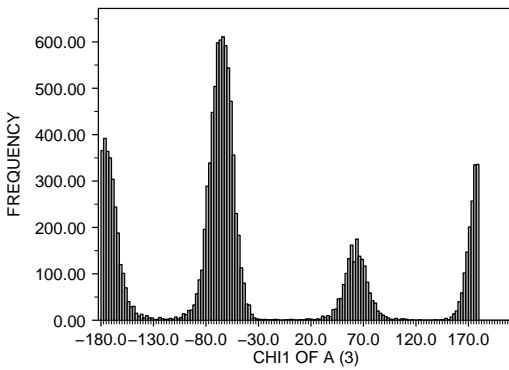
1.8-2.0 : X-RAY RESOLUTION OF A (35)
GLY : RESIDUE TYPE OF A (1)
0.0 POINTS



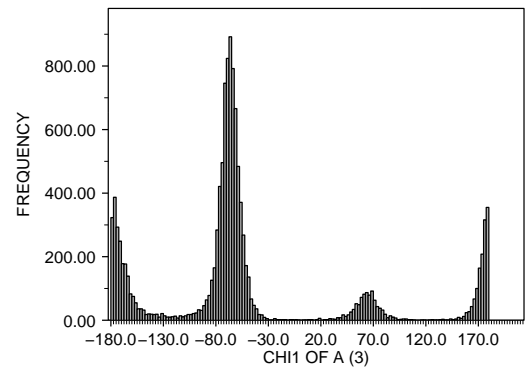
1.8-2.0 : X-RAY RESOLUTION OF A (35)
LEU : RESIDUE TYPE OF A (1)
50166.0 POINTS



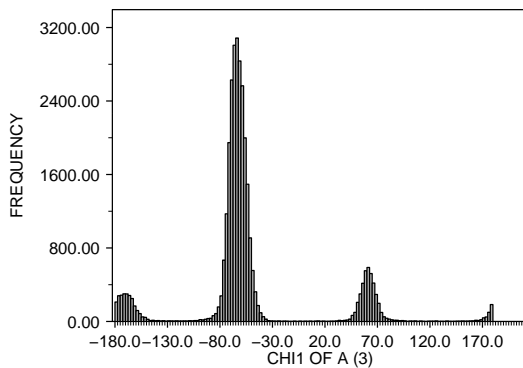
1.8-2.0 : X-RAY RESOLUTION OF A (35)
HIS : RESIDUE TYPE OF A (1)
12489.0 POINTS



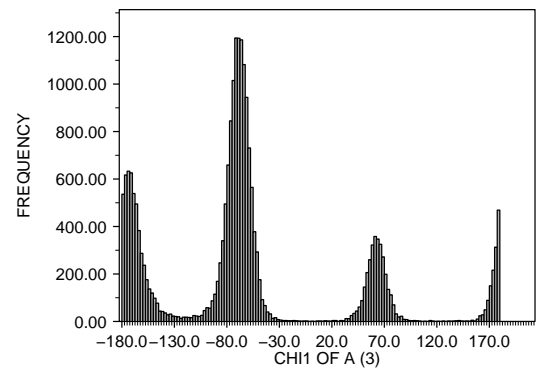
1.8-2.0 : X-RAY RESOLUTION OF A (35)
MET : RESIDUE TYPE OF A (1)
11960.0 POINTS



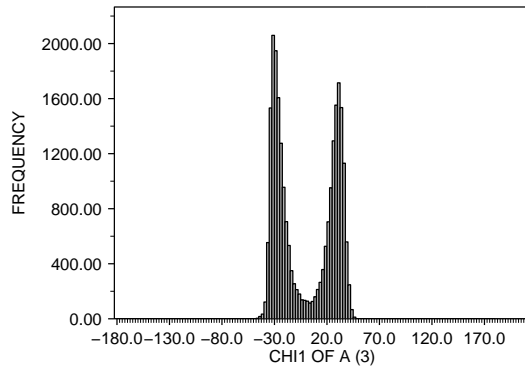
1.8-2.0 : X-RAY RESOLUTION OF A (35)
ILE : RESIDUE TYPE OF A (1)
31401.0 POINTS



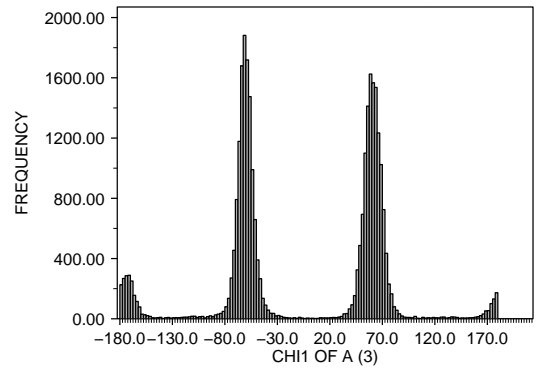
1.8-2.0 : X-RAY RESOLUTION OF A (35)
ASN : RESIDUE TYPE OF A (1)
22102.0 POINTS



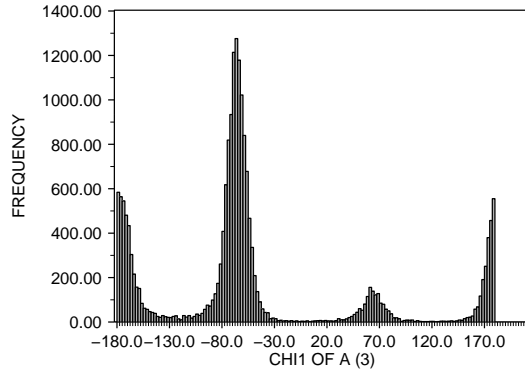
1.8-2.0 : X-RAY RESOLUTION OF A (35)
PRO : RESIDUE TYPE OF A (1)
24283.0 POINTS



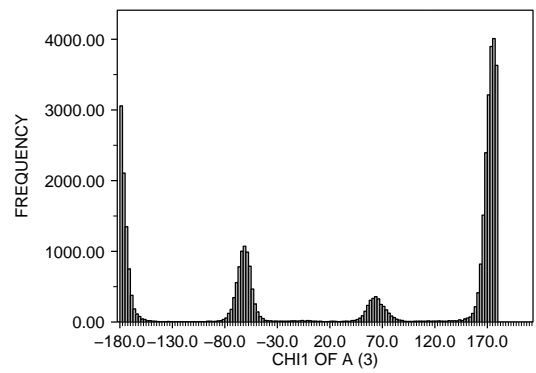
1.8-2.0 : X-RAY RESOLUTION OF A (35)
THR : RESIDUE TYPE OF A (1)
28631.0 POINTS



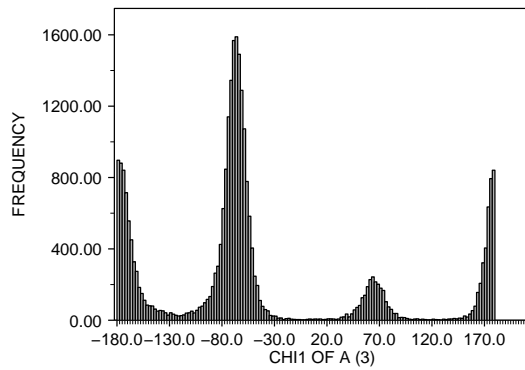
1.8-2.0 : X-RAY RESOLUTION OF A (35)
GLN : RESIDUE TYPE OF A (1)
19268.0 POINTS



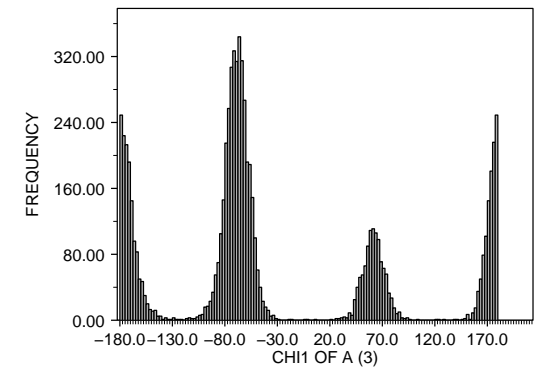
1.8-2.0 : X-RAY RESOLUTION OF A (35)
VAL : RESIDUE TYPE OF A (1)
39330.0 POINTS



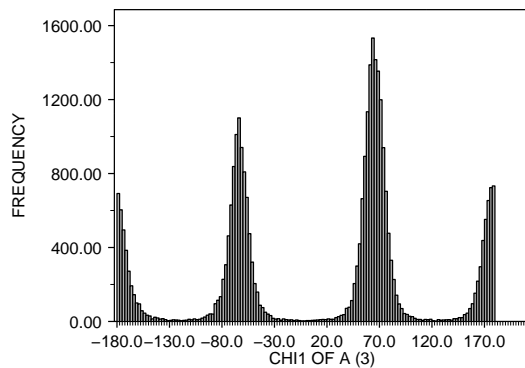
1.8-2.0 : X-RAY RESOLUTION OF A (35)
ARG : RESIDUE TYPE OF A (1)
27821.0 POINTS



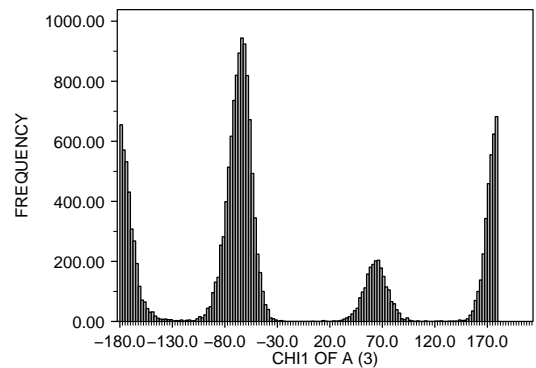
1.8-2.0 : X-RAY RESOLUTION OF A (35)
TRP : RESIDUE TYPE OF A (1)
7218.0 POINTS



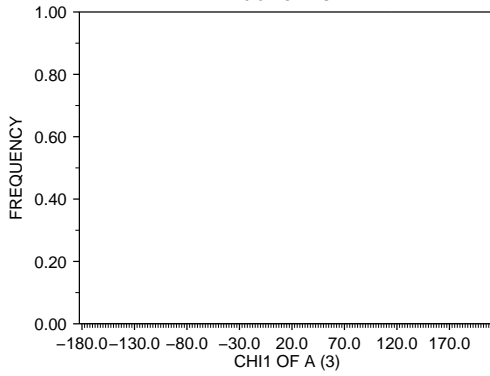
1.8-2.0 : X-RAY RESOLUTION OF A (35)
SER : RESIDUE TYPE OF A (1)
30741.0 POINTS



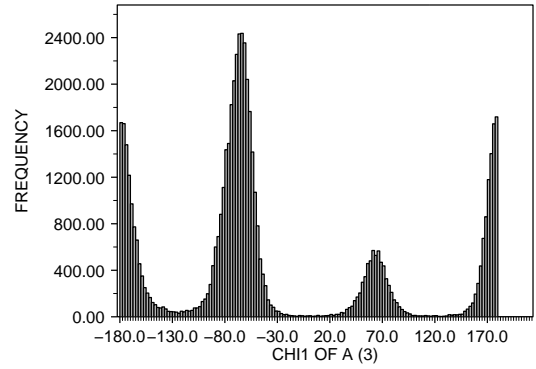
1.8-2.0 : X-RAY RESOLUTION OF A (35)
TYR : RESIDUE TYPE OF A (1)
18700.0 POINTS



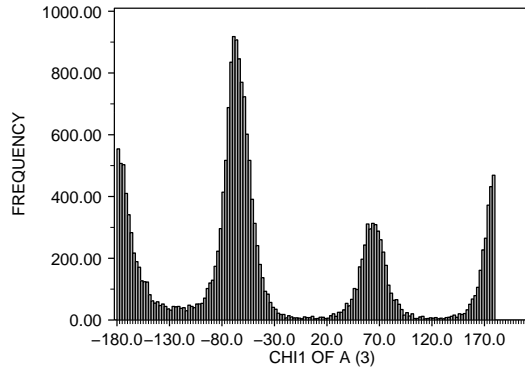
NMR_g>2 : X-RAY RESOLUTION OF A (35)
ALA : RESIDUE TYPE OF A (1)
0.0 POINTS



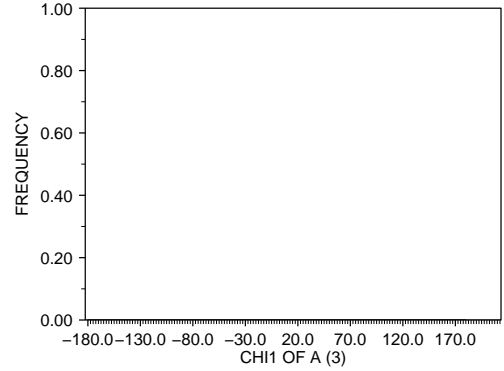
NMR_g>2 : X-RAY RESOLUTION OF A (35)
PHE : RESIDUE TYPE OF A (1)
55994.0 POINTS



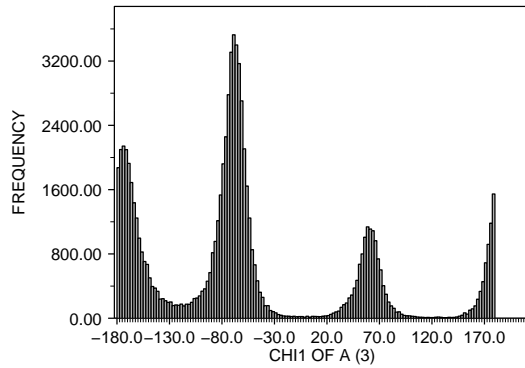
NMR_g>2 : X-RAY RESOLUTION OF A (35)
CYS : RESIDUE TYPE OF A (1)
21382.0 POINTS



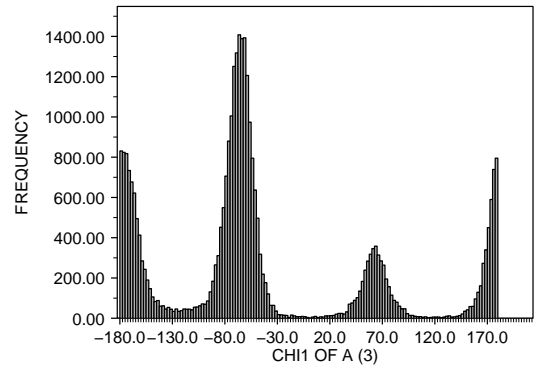
NMR_g>2 : X-RAY RESOLUTION OF A (35)
GLY : RESIDUE TYPE OF A (1)
0.0 POINTS



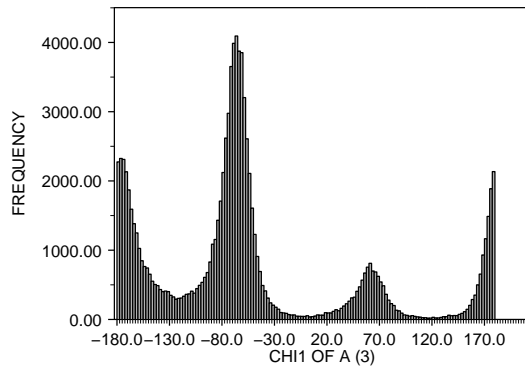
NMR_g>2 : X-RAY RESOLUTION OF A (35)
ASP : RESIDUE TYPE OF A (1)
78424.0 POINTS



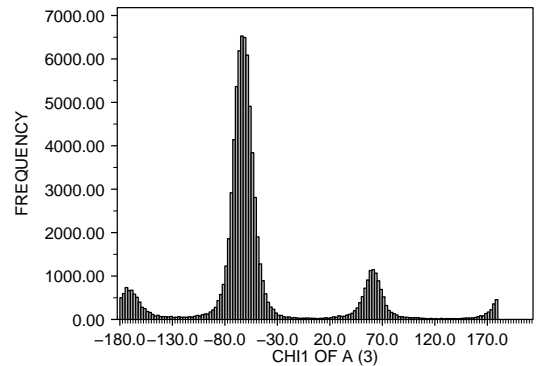
NMR_g>2 : X-RAY RESOLUTION OF A (35)
HIS : RESIDUE TYPE OF A (1)
32060.0 POINTS



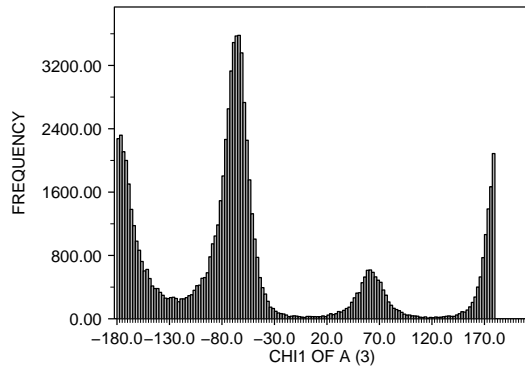
NMR_g>2 : X-RAY RESOLUTION OF A (35)
GLU : RESIDUE TYPE OF A (1)
98530.0 POINTS



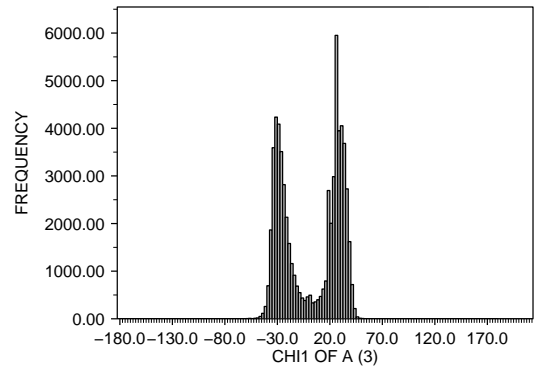
NMR_g>2 : X-RAY RESOLUTION OF A (35)
ILE : RESIDUE TYPE OF A (1)
81255.0 POINTS



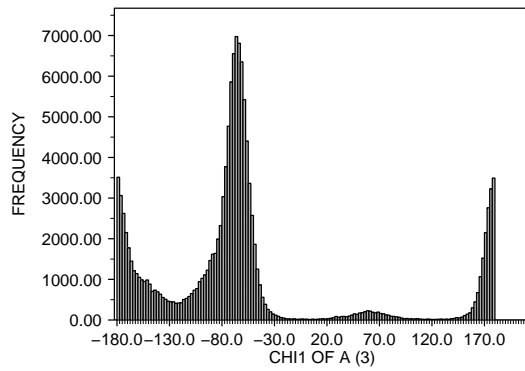
NMR_g>2 : X-RAY RESOLUTION OF A (35)
LYS : RESIDUE TYPE OF A (1)
83666.0 POINTS



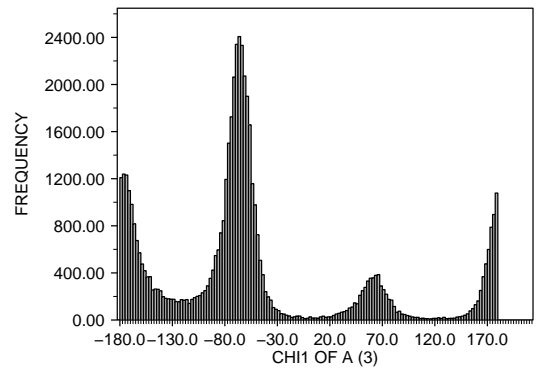
NMR_g>2 : X-RAY RESOLUTION OF A (35)
PRO : RESIDUE TYPE OF A (1)
63731.0 POINTS



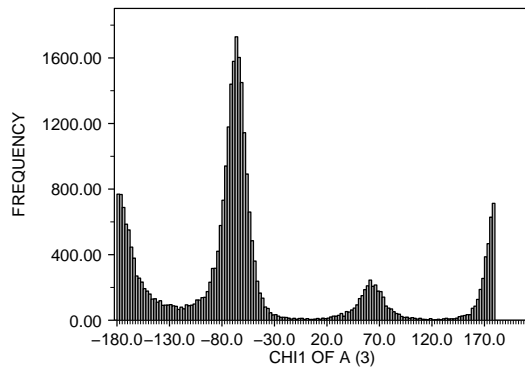
NMR_g>2 : X-RAY RESOLUTION OF A (35)
LEU : RESIDUE TYPE OF A (1)
131797.0 POINTS



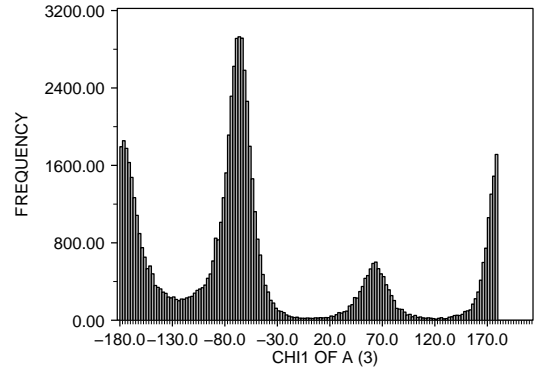
NMR_g>2 : X-RAY RESOLUTION OF A (35)
GLN : RESIDUE TYPE OF A (1)
52110.0 POINTS



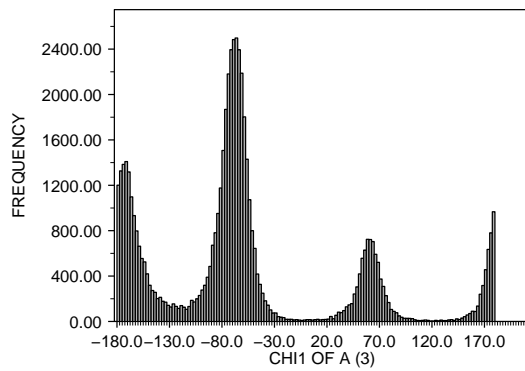
NMR_g>2 : X-RAY RESOLUTION OF A (35)
MET : RESIDUE TYPE OF A (1)
30874.0 POINTS



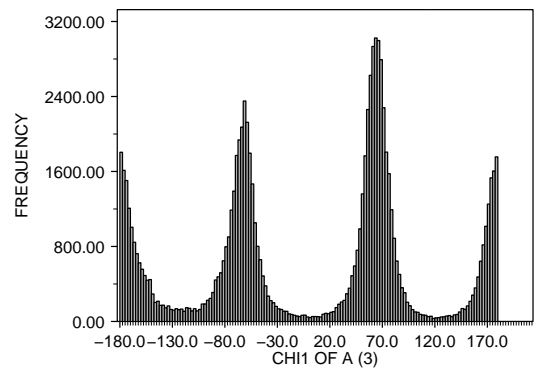
NMR_g>2 : X-RAY RESOLUTION OF A (35)
ARG : RESIDUE TYPE OF A (1)
72554.0 POINTS



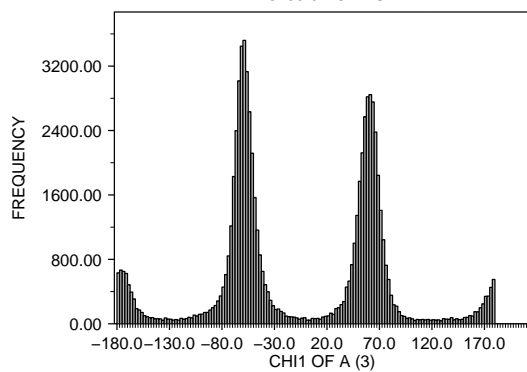
NMR_g>2 : X-RAY RESOLUTION OF A (35)
ASN : RESIDUE TYPE OF A (1)
57361.0 POINTS



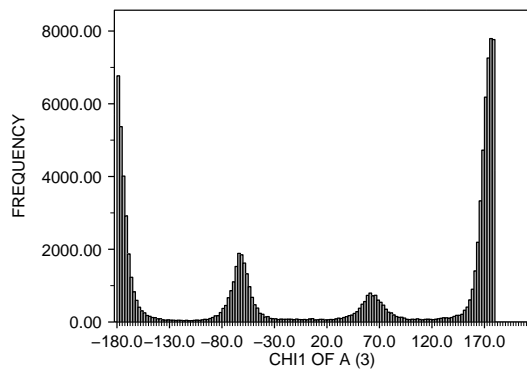
NMR_g>2 : X-RAY RESOLUTION OF A (35)
SER : RESIDUE TYPE OF A (1)
86724.0 POINTS



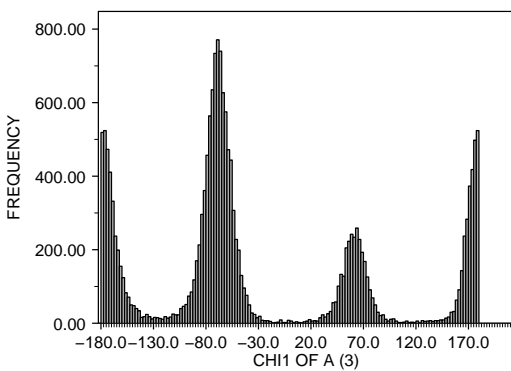
NMR_α>2 : X-RAY RESOLUTION OF A (35)
THR : RESIDUE TYPE OF A (1)
73453.0 POINTS



NMR_α>2 : X-RAY RESOLUTION OF A (35)
VAL : RESIDUE TYPE OF A (1)
98121.0 POINTS



NMR_α>2 : X-RAY RESOLUTION OF A (35)
TRP : RESIDUE TYPE OF A (1)
17924.0 POINTS



NMR_α>2 : X-RAY RESOLUTION OF A (35)
TYR : RESIDUE TYPE OF A (1)
46818.0 POINTS

